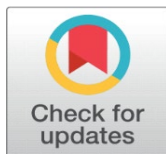
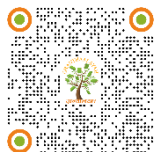


# INTRODUCING OPTICAL MICROSCOPY METHODOLOGY DISPLAYING EMITTED ELECTROMAGNETIC ENERGY OF PRE-CANCEROUS SKIN SQUAMOUS CELL CARCINOMA

Abrahám A. Embi <sup>1</sup>  

<sup>1</sup> BS MBA, 13442 SW 102 Lane Miami, 33186, Florida, United States



Received 20 December 2022  
Accepted 22 January 2023  
Published 06 February 2023

## Corresponding Author

Abrahám A. Embi, [Embi21@att.net](mailto:Embi21@att.net)

## DOI

[10.29121/granthaalayah.v11.i1.2023.4949](https://doi.org/10.29121/granthaalayah.v11.i1.2023.4949)

**Funding:** This research received no specific grant from any funding agency in the public, commercial, or not-for-profit sectors.

**Copyright:** © 2023 The Author(s). This work is licensed under a [Creative Commons Attribution 4.0 International License](https://creativecommons.org/licenses/by/4.0/).

With the license CC-BY, authors retain the copyright, allowing anyone to download, reuse, re-print, modify, distribute, and/or copy their contribution. The work must be properly attributed to its author.



## ABSTRACT

Ever since the development in 2015 (Embi et al. (2015), Scherlag et al. (2015)) and published in 2016 Scherlag et al. (2016) of a tabletop microscopy methodology aimed to record plant and animal tissue energy in the form of electromagnetic radiation (EMR), this author and others have had the opportunity to explore and publish in the less traveled road of Biophysics. This was mainly done by using an easily accessible human miniorgan, namely a hair follicle Schneider et al. (2009).

**Keywords:** Cancer Tissue Energy, Potassium Ferricyanide, Anisotropy, Precancerous Tissue, Squamous Cell Biopsy, Bioelectromagnetic Energy

## DEFINITIONS OF TERMS

**Anisotropy:** “(of an object or substance) having a physical property that has a different value when measured in different directions. A simple example is wood, which is stronger along the grain than across it”. (Oxford Dictionary).

**EMR:** Electromagnetic Radiation.

**K3Fe:** Acronym for Potassium Ferricyanide  $K_3 [Fe (CN)_6]$  crystals.

**Scab:** Protective tissue covering those forms after your skin has been damaged.

**SSP:** Single Slide Preparation. Sample placed in center of glass slide and covered by two drops K3Fe. Allowed to evaporate.

## 1. INTRODUCTION

Ever since the development in 2015 (Embi et al. (2015), Scherlag et al. (2015)) and published in 2016 Scherlag et al. (2016) of a tabletop microscopy methodology aimed to record plant and animal tissue energy in the form of electromagnetic radiation (EMR), this author and others have had the opportunity to explore and publish in the less traveled road of Biophysics. This was mainly done by using an easily accessible human miniorgan, namely a hair follicle Schneider et al. (2009).

## 2. AREAS EXPLORED

Using the tabletop microscopy was instrumental in proposing endogenous EMRs emitted during cell respiration as an additional factor in cancer genesis [Embi \(2016\)](#). The latter was supported by prior in vitro findings where the breakdown of the H<sub>2</sub>O<sub>2</sub> during cellular respiration oxidation reduction reaction was demonstrated to penetrate a 1 mm glass slide causing disruption of crystallized Prussian Blue Stain crystals in solution. The latter finding was then rationalized as an EMR foundation for the hypothesis [Embi \(2016\)](#). Other publications introduced this author to the concept of anisotropy, being a non-uniform wave of energy activation [Moscow Institute of Physics and Technology. \(2016\)](#). The importance of anisotropy is identified as an essential supporting mechanism in this research letter, Why? Because the anisotropic Potassium Ferricyanide of formula  $K_3[Fe(CN)_6]$  in solution has been established as partially absorbing incoming EMRs (8,9) and the 2016 published optical microscopy methodology includes  $K_3[Fe(CN)_6]$  in solution plus very small iron particles; for lack of resources this homebound citizen scientist has been using diluted  $K_3[Fe(CN)_6]$  in solution as sole component with excellent results recording the tissue absorption of emitted EMR.

## 3. COMPARATIVE RESULTS RATIONALE

The results and images herein presented are comparative, meaning experiments done on normal and precancerous tissues are mounted and analyzed using the same water drops diluted Potassium Ferricyanide crystals. As a clarifying statement: For the purpose of this presentation the fact that at present  $K_3[Fe(CN)_6]$  has been proven to partially absorb incoming EMRs is a moot point, Why? Because both precancerous and normal tissue samples were analyzed using crystals from the same badge ([Exhibit 1](#), [Exhibit 2](#)).

## 4. PRIOR PUBLICATION COMPARING NORMAL AND SQUAMOUS CELL CARCINOMA SCABS

As fate has it, this author had compared and published images of EMR emissions of normal vs post-biopsied positive squamous cell carcinoma scabs. In that paper, images presented showed a notable difference in emissions between the normal and cancerous scabs [Embi \(2022\)](#). Not satisfied with the experiment again, upon a scheduled dermatologist appointment to freeze some pathologists interpreted precancerous lesions, I asked if I could get tissue samples before freezing, the precancerous lesion was shaved, and the tissue samples placed in a small container for further analysis. The normal epidermal tissue samples were retrieved via tweezers from this 80 y/o skin.

**EXHIBIT I**



SHAVED PRE-CANCEROUS SKIN LESION TISSUE FROM UPPER LEG. 5 MM DIAMETER



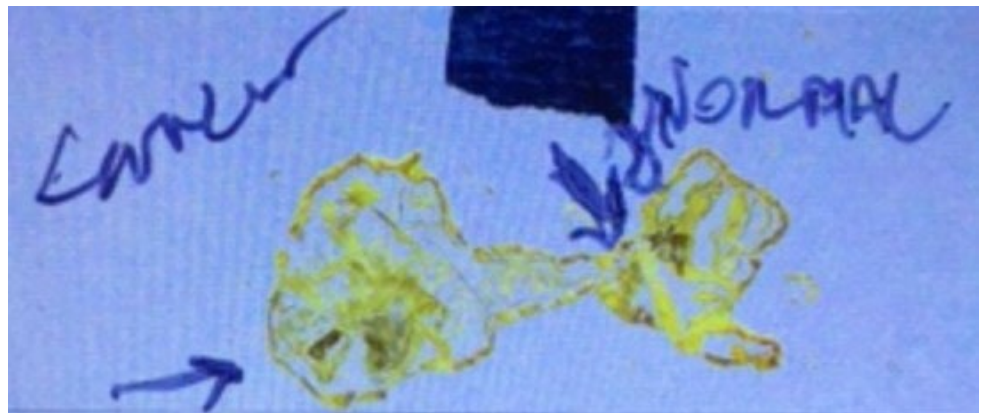
AMPLIFIED NORMAL EPIDERMAL SKIN FLAKE SAMPLE FROM KNEE AREA

**Exhibit 1** Showing Tissue Selection

**5. THE RESULTS**

A pinch or Potassium Ferricyanide crystals placed on a glass slide and diluted in three drops of bottled water. The normal tissue and the cancerous tissue small fragments were placed at opposite ends of a glass slide containing the testing solution and allowed to evaporate. After and during evaporation images were recorded in a video microscope and store in an Apple Computer video application for later retrieval. A total of three pre-cancerous experiments were done. Important to note that the tissue donor (myself) have had several Squamous Cell Skin Carcinoma removed.

**EXHIBIT II**



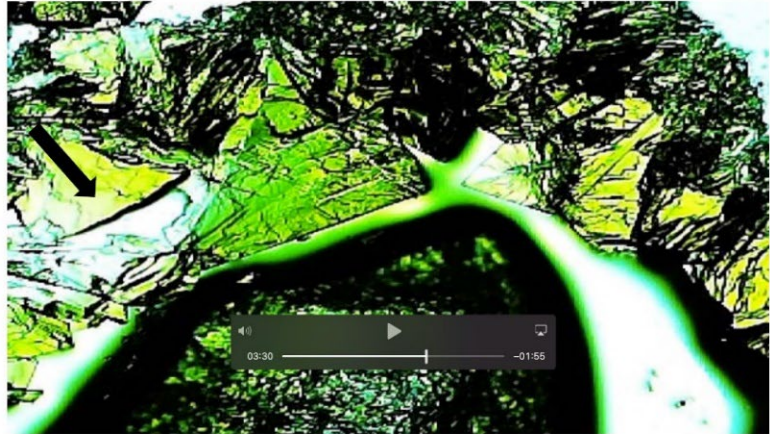
**Exhibit 2** Slide Image Post Evaporation Demonstrating Using Same Potassium Ferricyanide Solution for Both Samples

The image below ([Exhibit 3](#)) is representative of the slower interaction (absorption of EMRs) between Potassium Ferricyanide in solution and a normal epidermal skin flake (See [Exhibit 1](#) above). Please compare the video images in both exhibits to appreciate the observed exacerbated EMR emissions in a pre-cancerous lesion.

**EXHIBIT III**



**DEMONSTRATION OF NORMAL EPIDERMAL LAYER ELECTROMAGNETIC EMISSIONS**



Normal knee epidermal tissue layer. Black Arrow: Potassium Ferricyanide crystals attracted towards normal skin epidermal layer fragment. For details link to: <https://youtu.be/K4cNdKftz1c> Or Scan QR Code in upper left corner of image.

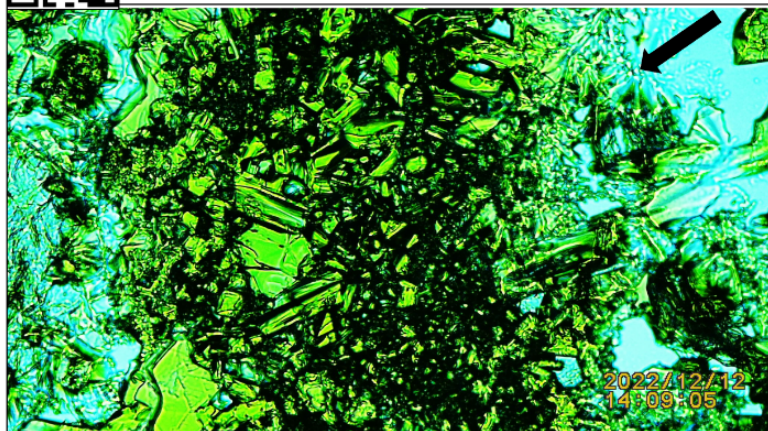
**Exhibit 3** Demonstration of Normal Epidermal Layer Electromagnetic Emissions

The image and video below ([Exhibit 4](#)) were n=1 of the precancerous tissue biopsy placed on a slide and covered by drops of Potassium Ferricyanide in solution. Please notice the increased speed in crystals formation, indicative of a strong electromagnetic environment. This exacerbated speed was not present in the normal skin epidermal tissue. This increased speed was also not appreciated in two of the pre-cancerous samples n=2 and n=3. Possibly corroborating the presence of multiple EMR foci in pre- cancerous tissue. (Compare videos presented in Exhibits)

**EXHIBIT IV**



**DEMONSTRATION OF SHAVED PRE-CANCEROUS TISSUE LESION INDUCED ELECTROMAGNETIC STORM**



Pre-cancerous tissue disarray of EMR emissions- SSP K3Fe- Black Arrow: Erratic electromagnetic emissions detected by Potassium Ferricyanide in solution. For video link to: <https://youtu.be/v56V9ptvxxo> Or Scan QR Code in upper left corner of image.

**Exhibit 4** Demonstration of Shaved Pre-Cancerous Tissue Lesion Induced Electromagnetic Storm

EXHIBIT V



For additional video details link to: [https://youtu.be/YRMRs58w\\_Mc](https://youtu.be/YRMRs58w_Mc) Or Scan QR Code in top left of image  
Showing normal epidermis emissions of EMRs as semicircular concentric Potassium Ferricyanide Crystals  
Blue Arrows: Concentric semicircular crystals.

**Exhibit 5** Example of Normal Tissue Emitted Energy

EXHIBIT VI

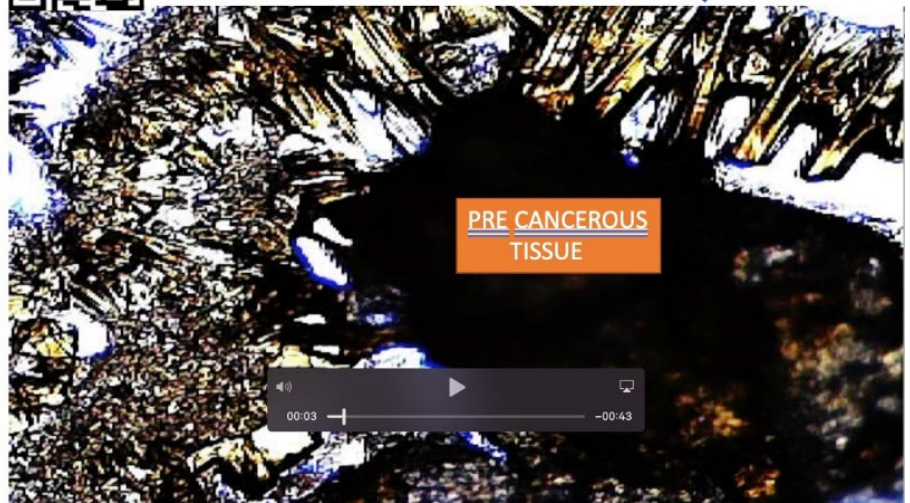


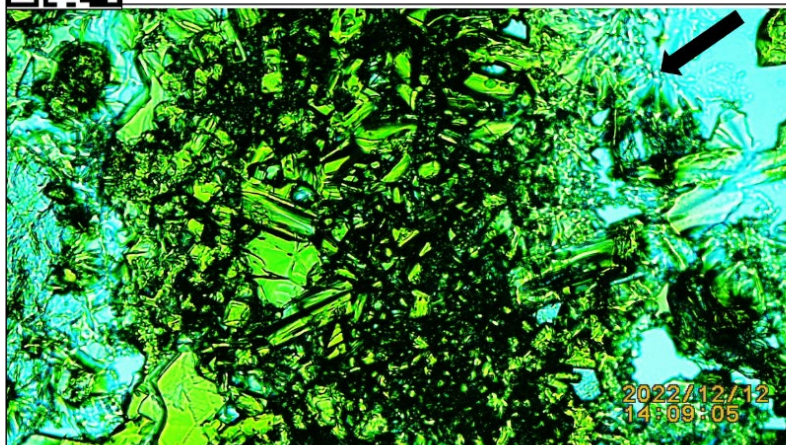
Figure showing: Blue Arrows- Multiple types of Potassium Ferricyanide crystals. Indicating more than one EMR emission foci. For video details link to: <https://youtu.be/oDJNavcBSn>  
Or Scan QR Code in left upper corner of image.

**Exhibit 6** Example of Pre-Cancerous Tissue Chaotic Energy Emission

## EXHIBIT VII



DEMONSTRATION OF SHAVED PRE-CANCEROUS TISSUE LESSION  
INDUCED ELECTROMAGNETIC STORM



Pre-cancerous tissue disarray of EMR emissions- SSP K3Fe- Black Arrow: Erratic electromagnetic emissions detected by Potassium Ferricyanide in solution. For video link to: <https://youtu.be/v56V9ptvxxo>  
Or Scan QR Code in upper left corner of image.

**Exhibit 7** Another Example of Pre-Cancerous Tissue Electromagnetic Emission

## 6. SUMMARY

In closing, in vitro experiments from two different papers, in the present submission and in reference Embi (2022) published in your journal are presented confirming the presence of aberrant or fragmented EMR emissions in pre-cancerous tissue.

## CONFLICT OF INTERESTS

None.

## ACKNOWLEDGMENTS

None.

## REFERENCES

- Baranov, D. G., Edgar, J. H., Hoffman, T., Bassim, N., and Caldwell, J. D. (2015). Perfect Interferenceless Absorption at Infrared Frequencies by a Van Der Waals Crystal. *Physical Review B*, 92(20). <https://doi.org/10.1103/PhysRevB.92.201405>.
- Embi, A. A. (2016). Cellular Respiration Oxidation Reduction Reactions Electromagnetic Fields Emissions as Possible Causative Agent in Diseases: A Chronic Bombardment Theory. *Physics Journal*, 2(3), 226–230.
- Embi, A. A. (2016). Endogenous Electromagnetic Forces Emissions During Cell Respiration as Additional Factor in Cancer Origin. *Cancer Cell International*, 16, 60.

- Embi, A. A. (2022). Detecting and Displaying Energy from Skin Cancer Lesions Comparison of Post Biopsy Skin Cancer Scabs with Normal Skin Injury Scabs. Biophysics approach. *International Journal of Research -Granthaalayah*, 10(6), 25–32.
- Embi, A.A., Jacobson, J.I., Sahoo, K., and Scherlag, B. J. (2015). Demonstration of Inherent Electromagnetic Energy Emanating from Isolated Human Hairs. *Journal of Nature and Science*, 1(3): e55.
- Figgis, B. N., Gerloch, M., Mason, R., and Sydney, R. (1969). Nyholm the Crystallography and Paramagnetic Anisotropy of Potassium Ferricyanide. <https://doi.org/10.1098/rspa.1969.0031>.
- Moscow Institute of Physics and Technology. (2016). New Way to Absorb Electromagnetic Radiation Demonstrated: Scientists Show That it is Possible to Fully Absorb Electromagnetic Radiation Using an Anisotropic Crystal. *Sciencedaily*. 2022, December 13.
- Scherlag, B. J., Huang, B., Zhang, I., Sahoo, K., Towner, R., Smith, N., Embi, A. A., and Po, S. S. (2015). Imaging the Electromagnetic Field of Plants (*Vigna radiata*) Using Iron Particles: Qualitative and Quantitative Correlates. *Nature and Science*, 1(3), e6.
- Scherlag, B. J., Sahoo, K., Abraham, A., and Embi, A. (2016). Novel and Simplified Method for Imaging the Electromagnetic Energy in Plant and Animal Tissues. *Nanoscience and Nanoengineering*, 2(1), 6–9.
- Schneider, M. R., Schmidt-Ullrich, R., and Paus, R. (2009). The Hair Follicle as a Dynamic Miniorgan. *Current Biology*, 19(3), R132–R142. <https://doi.org/10.1016/j.cub.2008.12.005>.